



Lateral Flow Testing Guidance

“Minister Chalk has reviewed and noted the update that you sent to him in February regarding CIVEA’S COVID-19 support plan and online training module for enforcement agents. I am encouraged to see the work that CIVEA is doing to ensure that your members work safely during the pandemic and the emphasis that is being placed on identifying and supporting vulnerable people. Thank you for continuing to provide my officials with data about the number and types of complaints that your members are receiving.”

LORD WOLFSON

During the Covid-19 pandemic CIVEA has responded pro-actively to support members to undertake enforcement activity in a safe, responsible and fair manner by:

- Stopping all enforcement activity at the start of the first lockdown (prior to regulatory guidance)
- Implementing the Covid-19 Post Lockdown Support Plan
- Providing access to online safe working practices training for Enforcement Agents
- Issuing new guidance in response to feedback from field agents
- Collating and reporting Covid-19 impact and complaint statistics to the Ministry of Justice
- Updating the Covid-19 Support Plan in January 2021
- Developing and providing access to vulnerability training for Enforcement Agents

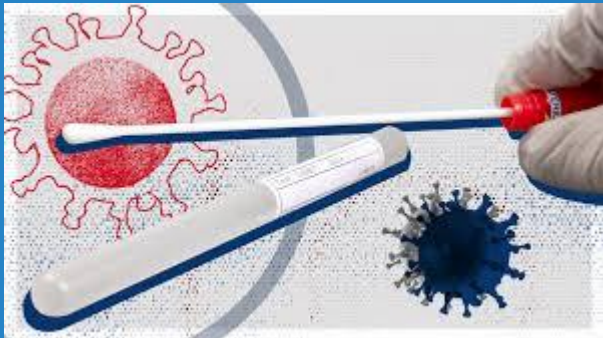
Due to the successful vaccination program and government lockdown roadmap we are nearing life returning closer to normal. However, the continued safety of the public and Enforcement Agents remains a priority for CIVEA.

Lateral Flow Testing



As has been the case throughout the COVID-19 pandemic, there has continued to be improvements and new initiatives that help defeat the spread of the Coronavirus and to help detect those who may be infected.

One of those initiatives is the Lateral Flow Test.



CIVEA is recommending that its members introduce regular rapid lateral flow testing for their enforcement agents to ensure the health and safety of both enforcement agents and the wider public.

While rapid lateral flow testing is not a legal requirement for enforcement agents, CIVEA feels that it is the responsible action to take for any agent conducting enforcement visits.

We are recommending field agents carry out a lateral flow test twice weekly and where this is not possible or consented to it would be advisable for agents to continue to follow the contactless visit approach and restrict entry to residential premises.

To further support our members ensure the safety of field agents and the public, CIVEA has produced some basic information and guidance about using the tests.

What is a Lateral Flow Test (LFT)?

Lateral flow device (LFD) testing is a fast and simple way to test people who do not have symptoms of COVID-19, but who may still be spreading the virus.

One in three people are suspected to have COVID-19 without presenting symptoms and so the Lateral Flow Device helps to identify those who may be asymptomatic.

A Lateral Flow Test are a type of antigen testing which looks for antigen – proteins on the surface of the virus to detect if a person has COVID-19. No laboratory equipment is needed, meaning they can be done quicker and more easily than PCR tests.



Why is it beneficial?

The tests are easy to use and give results in 30 minutes.

Having a Lateral Flow Test allows for you to quickly and easily identify whether you are suffering from coronavirus without having any symptoms.

Having this important information aids in the fight against coronavirus and stops the spread of the virus.

The lateral flow tests are to be taken twice-weekly which aims to ensure that any one who may be infected is informed as soon as possible.

Lateral Flow Tests (LTF)

LFT's should be taken twice weekly and no more than 4 days apart.

The LFT can only be carried out by those who are asymptomatic. Therefore, if you are experiencing any symptoms of COVID-19, you should not take the LFT and instead take the standard COVID-19 test, known as the PCR test.

Participating in LFT's is voluntary and firms must not hold personal data relating to COVID-19.

LFT's are however the most effective way of identifying individuals who have contracted COVID-19 and are asymptomatic and thus reducing the spread of the virus and any new variants of concern.

There are a number of ways you can order lateral flow tests: -

- Online through the gov.uk website <https://www.gov.uk/order-coronavirus-rapid-lateral-flow-tests>
- Calling 111
- Your local pharmacy
- Your local test site

Details of how to order any of the above are detailed on the gov.uk website following the below link: -

<https://www.nhs.uk/conditions/coronavirus-covid-19/testing/regular-rapid-coronavirus-tests-if-you-do-not-have-symptoms/>



Individuals must log the results of the test themselves, using one of the following ways: -

- Direct through the gov.uk website <https://www.gov.uk/report-covid19-result>
- Calling the number on the test kit instructions

COVID-19 Symptoms:

Enforcement agents **must not** work if they are symptomatic.

The symptoms are:

- a high temperature
- a new, continuous cough
- a loss or change to your sense of smell or taste

They should get a PCR test as soon as possible and self-isolate.

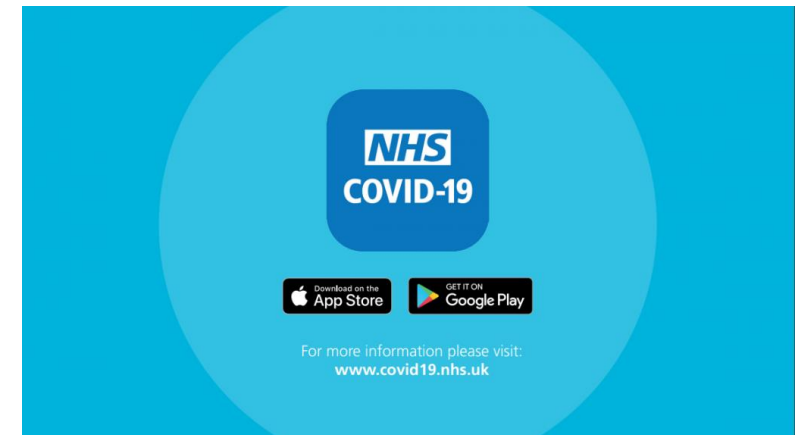
NHS Test & Trace:

Enforcement agents should be registered with the NHS Test & Trace App.

Enforcement agents must not work if they are asked to self-isolate by NHS Test and Trace, for example if they have been identified as a close, recent contact of someone who has tested positive for COVID-19.

Enforcement agents must also stay at home and self-isolate if a member of their household is symptomatic.

Partaking in the LFTs does not mean that should and individual be contacted by track and trace, they do not have to self-isolate. Any person contacted by track and trace, regardless of having a negative LFT result must self isolate.



Stop the Spread



For more information regarding the virus and lateral flow tests. Please visit the below websites: -

- NHS Coronavirus page - <https://www.nhs.uk/conditions/coronavirus-covid-19/>
- Public Health Update - <https://publichealthmatters.blog.gov.uk/2020/01/23/wuhan-novel-coronavirus-what-you-need-to-know/>
- British Government Public Information page - <https://www.gov.uk/guidance/coronavirus-covid-19-information-for-the-public>
- Lateral Flow Testing - <https://www.gov.uk/guidance/understanding-lateral-flow-antigen-testing-for-people-without-symptoms>

